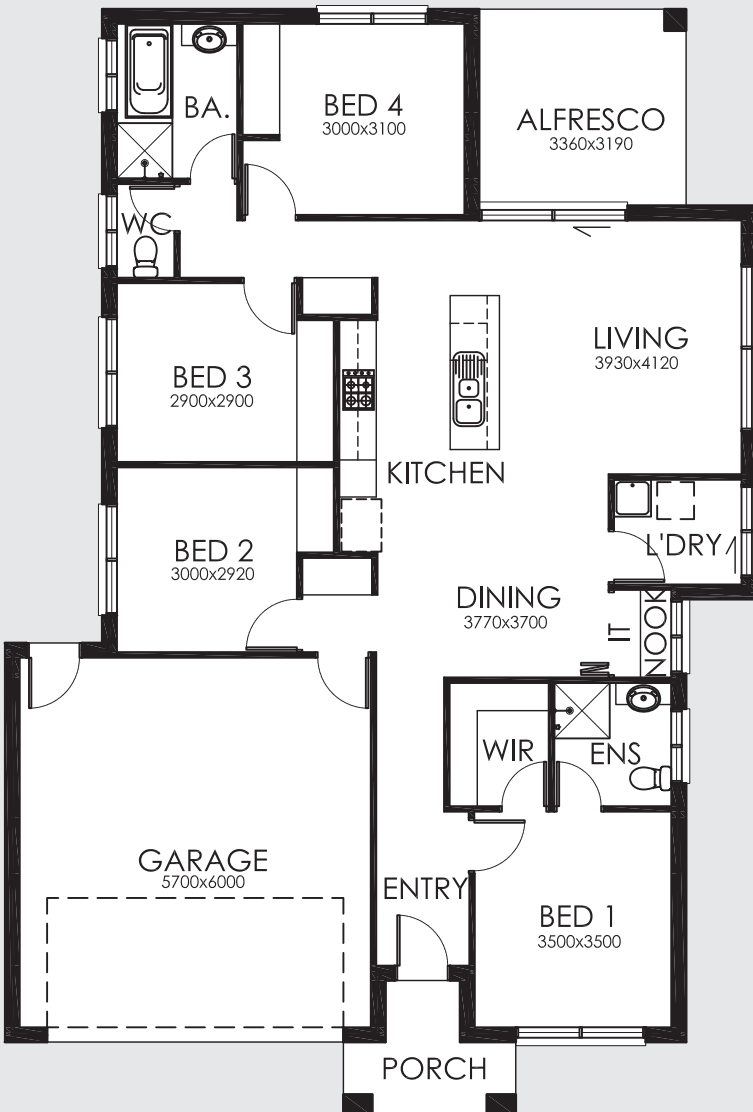


# ONE179



## FEATURES

- 4 Bedrooms
- Large Kitchen/Living/Dining Area
- Double Lock-Up Garage
- Outdoor Alfresco
- Ensuite & WIR

## AREA SPECIFICATIONS

Living Area	126.89 m <sup>2</sup>
Porch	4.57 m <sup>2</sup>
Garage	37.68 m <sup>2</sup>
Alfresco	10.71 m <sup>2</sup>

**TOTAL** 179.85 m<sup>2</sup>

Width 12.20m and Depth 17.97m

# TASSIE HOMES

Innovative & Affordable

e. [sales@tassiehomes.com.au](mailto:sales@tassiehomes.com.au)

w. [www.tassiehomes.com.au](http://www.tassiehomes.com.au)

p. 13 000 TASSIE