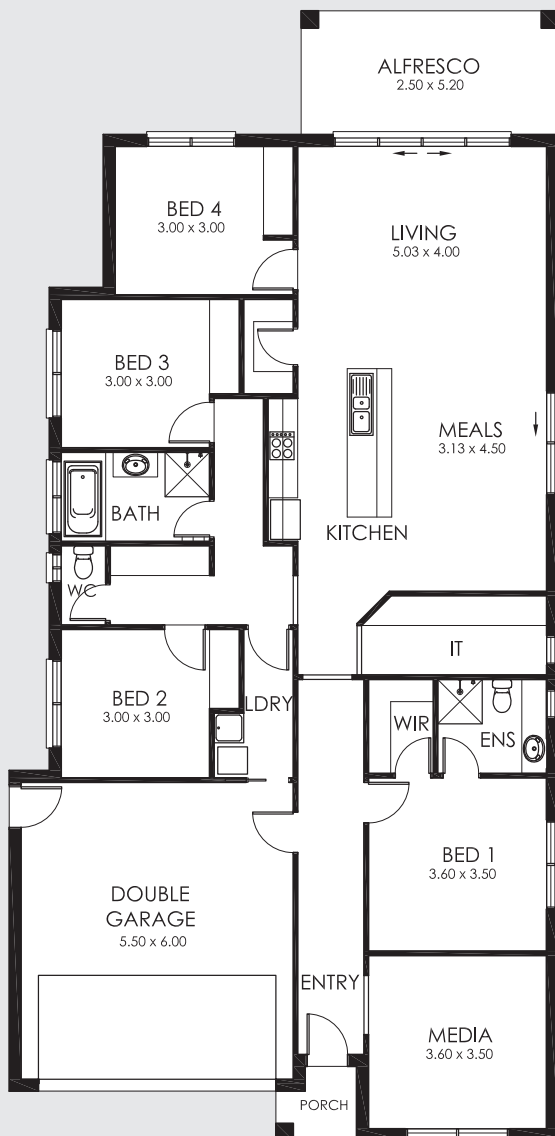


# ONE219



## FEATURES

- 4 Bedrooms
- Large Kitchen / Living / Dining Area
- Double Lock-Up Garage
- Great Outdoor Alfresco
- Ensuite & WIR
- Separate Media Room

## AREA SPECIFICATIONS

Living Area	168.16m <sup>2</sup>
Garage	36.18m <sup>2</sup>
Porch	2.15m <sup>2</sup>
Alfresco	13.00m <sup>2</sup>
<b>TOTAL</b>	<b>219.49m<sup>2</sup></b>

Width 11.10m and Depth 22.83m



e. [sales@tassiehomes.com.au](mailto:sales@tassiehomes.com.au)  
w. [www.tassiehomes.com.au](http://www.tassiehomes.com.au)  
p. 13 000 TASSIE